



**REGIONAL SPECIALISED METEOROLOGICAL CENTRE-TROPICAL CYCLONES, NEW DELHI
TROPICAL WEATHER OUTLOOK**

DEMS-RSMC TROPICAL CYCLONES NEW DELHI DATED 30.05.2021

TROPICAL WEATHER OUTLOOK FOR NORTH INDIAN OCEAN (THE BAY OF BENGAL AND ARABIAN SEA) VALID FOR NEXT 120 HOURS ISSUED AT 0600 UTC OF 30.05.2021 BASED ON 0300 UTC OF 30.05.2021.

BAY OF BENGAL:

SCATTERED LOW AND MEDIUM CLOUDS WITH EMBEDDED INTENSE TO VERY INTENSE CONVECTION LAY OVER EASTCENTRAL & SOUTHEAST BAY OF BENGAL, EAST OF LONGITUDE 90.0°E AND MODERATE TO INTENSE CONVECTION LAY OVER ANDAMAN SEA, ARAKAN COAST.

PROBABILITY OF CYCLOGENESIS (FORMATION OF DEPRESSION) DURING NEXT 120 HRS:

24 HOURS	24-48 HOURS	48-72 HOURS	72-96 HOURS	96-120 HOURS
NIL	NIL	NIL	NIL	NIL

ARABIAN SEA:

SCATTERED LOW AND MEDIUM CLOUDS WITH EMBEDDED INTENSE TO VERY INTENSE CONVECTION LAY OVER EASTCENTRAL ADJOINING SOUTHEAST ARABIAN SEA BETWEEN LATITUDE 10.0°N TO 18.0°N EAST OF LONGITUDE 67.0°E.

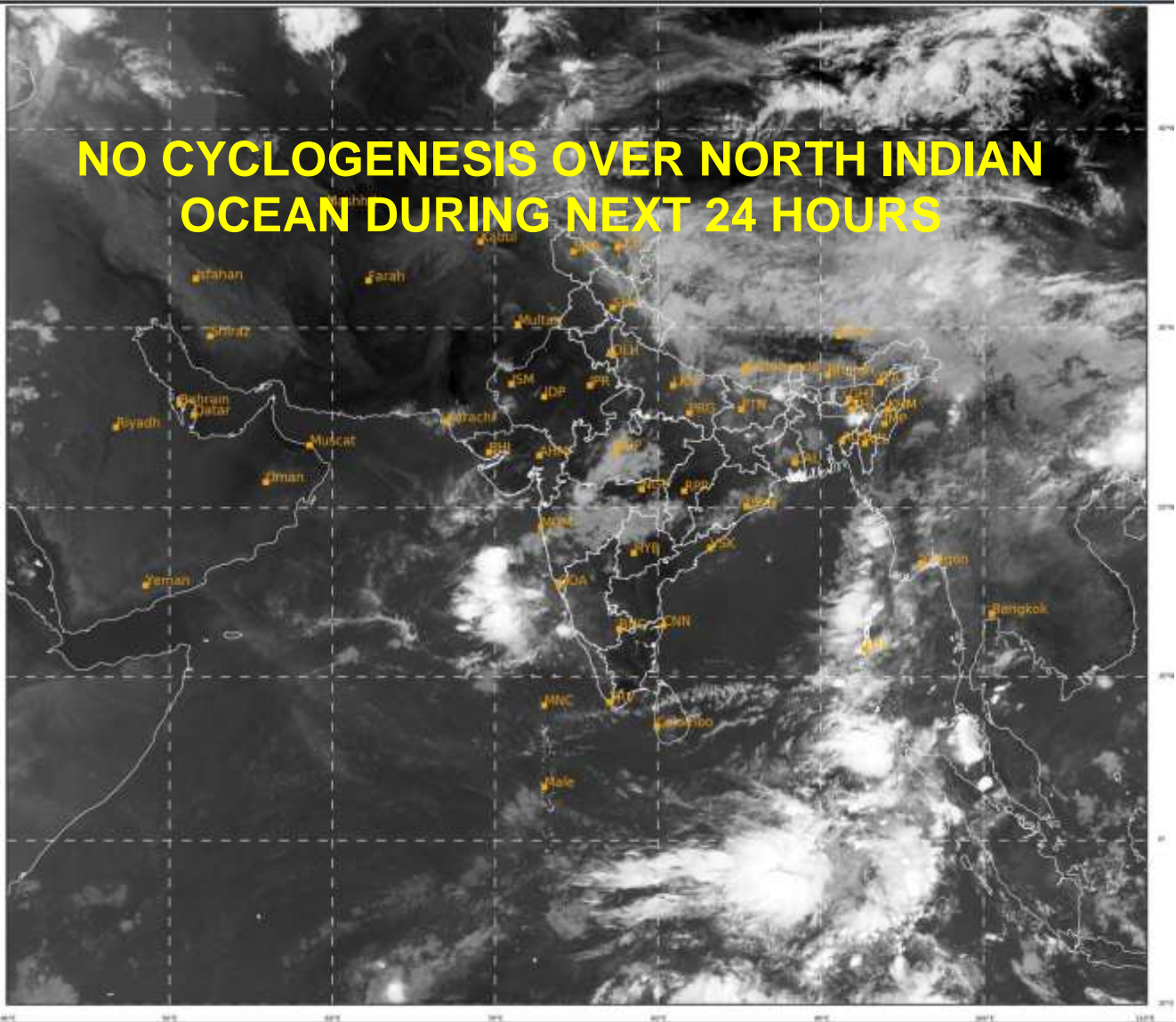
PROBABILITY OF CYCLOGENESIS (FORMATION OF DEPRESSION) DURING NEXT 120 HRS:

24 HOURS	24-48 HOURS	48-72 HOURS	72-96 HOURS	96-120 HOURS
NIL	NIL	NIL	NIL	NIL

REMARKS: NIL



NO CYCLOGENESIS OVER NORTH INDIAN OCEAN DURING NEXT 24 HOURS




359

927

IMD, DELHI

PROBABILITY OF CYCLOGENESIS (FORMATION OF DEPRESSION):NIL: 0%, LOW: 1-25%, FAIR: 26-50%, MODERATE: 51-75% AND HIGH: 76-100%

 This is a guidance Bulletin for the WMO/ESCAP Panel Member countries,. Please visit respective National websites for Country specific Bulletins